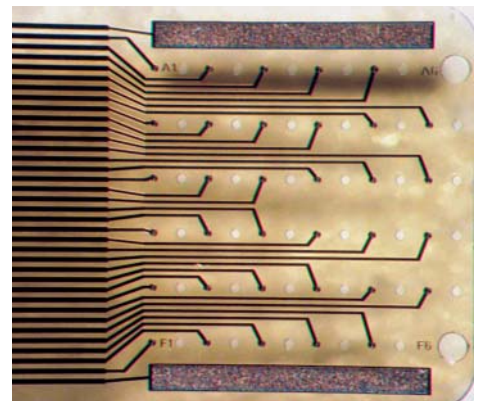
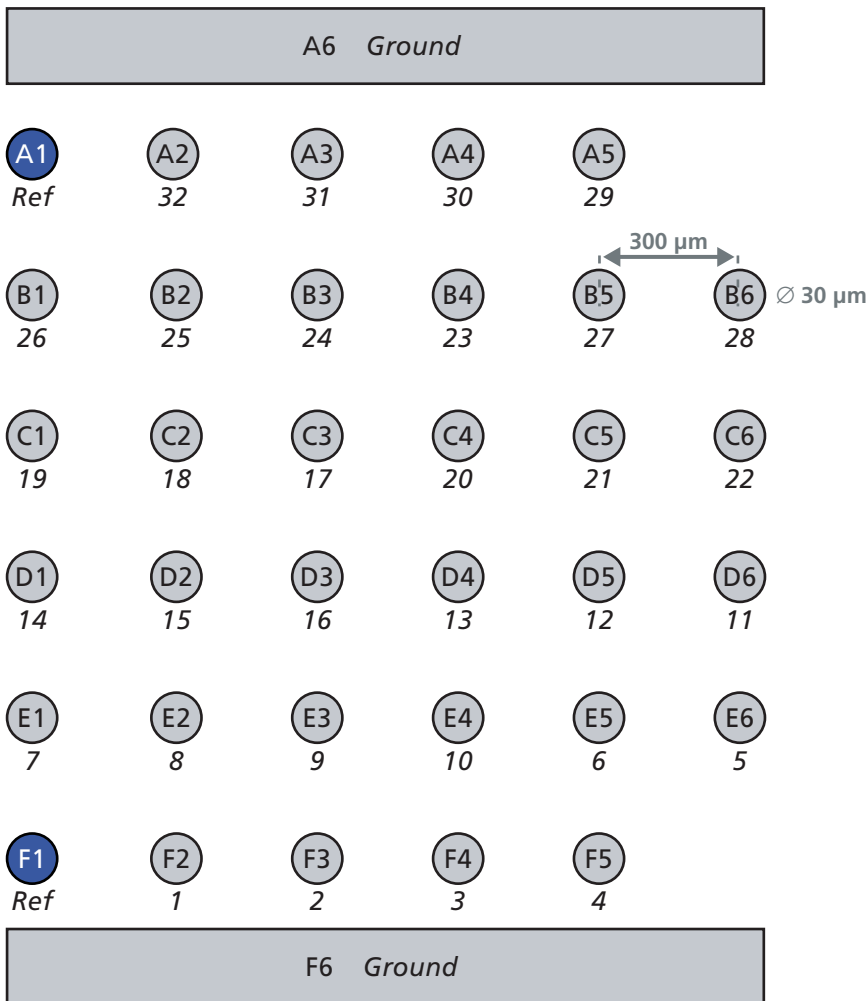


FlexMEA

**36 Electrodes: 32 recording electrodes, 2 indifferent reference electrodes,
2 large ground electrodes; for use with miniature preamplifier MPA32I-FLEX**



The letter-digit code is the electrode identifier and refers to the position of the electrode in the grid. Below are the recording channel numbers (in italics) that refer to the channel numbers in the MC_Rack program. Please make sure that you have selected the linear channel layout in the MC_Rack program. See the MC_Rack user manual or help for details.

If you use more than one MPA32I-FLEX and a ME64 System, the signal collector SC2x32 leads the output channels of the second amplifier to channel number 33-64. Please see the SC2x32 data sheet for details.